

A large, ornate, illuminated chandelier hangs in the center of a grand, arched hall. The chandelier is composed of numerous small, glowing lights and intricate metalwork, creating a complex, starburst-like structure. The hall features high ceilings with arched openings and classical architectural details. The lighting is dramatic, with the chandelier being the primary light source, casting a warm glow on the surrounding architecture.

PHILIP BEESLEY SELECTED WORKS

CONTACT

Philip Beesley

11 Dublin St., Unit 4
Toronto, ON, Canada M6H 1J4

647-824-8284
pbeesley@uwaterloo.ca
www.philipbeesleystudioinc.com

“extraordinarily beautiful and reverent”

Gary Michael Dault, CANADIAN ARCHITECT

“floated like a waking dream...suspended in an opalescent membrane”

Robert Everett-Green, GLOBE AND MAIL

“symphony of pure sensation”

Ben Lensink, SCHREEF DE TWENTSCHE COURANT TUBANTIA

“hard to believe it was designed by a person and not born of nature”

SHAPE & COLOUR World Press

“arresting”

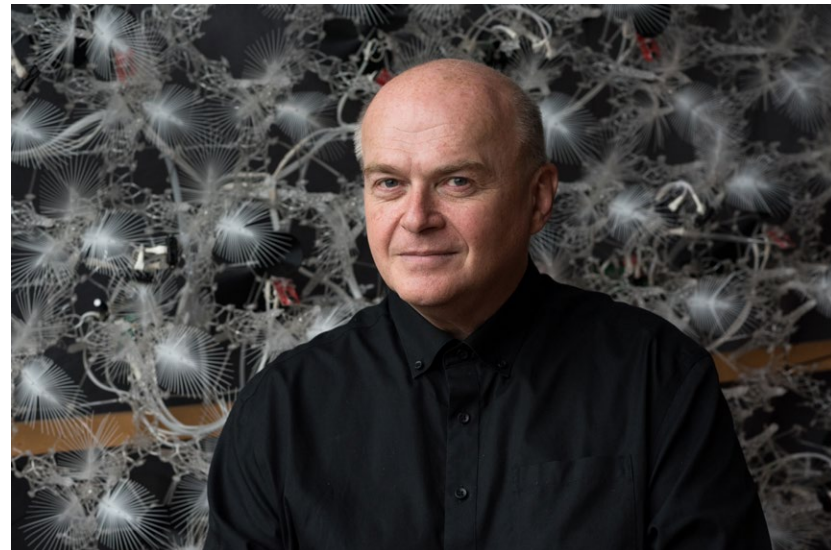
LEONARDO Journal of the International Society of the Arts, Sciences and Technology

“the power to be the dominant aesthetic of 21st century landscapes”

Hannah Devlin, LONDON TIMES

“the future of architecture”

Michael Slezak, NEW SCIENTIST



PHILIP BEESLEY

Philip Beesley is widely known for his immersive sentient physical environments. His artworks include sculpture, precious objects, immersive canopies, and framed works. His installations were presented twice at the Venice Biennale for Architecture and are now touring Europe and Asia. His collaborations with haute couture designer Iris van Herpen have appeared in 15 collections.

His artwork incorporates innovative technologies including lightweight digital fabrication, distributed computation and experimental textiles and often focuses on the subtle boundaries that lie between natural and technical worlds, revealing fertile qualities.

Beesley has created an interdisciplinary organization in the Living Architecture Systems Group, connecting many organizations and researchers from architecture, engineering and science. He has contributed innovative curriculum frameworks across education and practice.

Awards that distinguish his collaborative work include two Governor General's awards for Architecture, the Canadian Prix de Rome, VIDA, Ars Technica STARTS, and FEIDAD. The University of Waterloo awarded Beesley the singular title of University Professor in 2023.

PHILIP BEESLEY SELECTED WORKS

INSTALLATIONS

ARIA 2025
CONSTELLATION 2024
AR FROUT REEF 2022
THRESHOLD 2021
GROVE and CRADLE 2021
MEANDER 2019
FUTURIUM NOOSPHERE 2019
AMATRIA 2018
NOOSPHERE within TRANSFORMING SPACE 2018
SENTIENT VEIL 2017
EPIPHYTE MEMBRANE 2014
EPIPHYTE CHAMBER 2013
AURORA 2013
SARGASSO 2011
HYLOZOIC VEIL 2011
HYLOZOIC GROUND 2011
MENISCUS 2008
ORGONE REEF 2003
HAYSTACK VEIL 1997
ERRATICS NET 1998

HAUTE COUTURE COLLABORATION WITH IRIS VAN HERPEN

VOLTAGE COAT with LIVING SHADOWS 2013/2023
MORPHOGENESIS DRESS 2020
GALACTIC GLITCH DRESS 2019
AERIFORM DRESS 2017

SELECTED VIDEO LINKS



ARIA 2025

Metal, Polymer, Glass, Protocell Liquids, Interactive Kinetics and Lights, Custom Speakers, Soundscape, Generative Projections
9m x 7m x 3m

TU Delft Science Centre, Delft, Netherlands

PHILIP BEESLEY



ARIA 2025

Metal, Polymer, Glass, Protocell Liquids, Interactive Kinetics and Lights, Custom Speakers, Soundscape, Generative Projections
9m x 7m x 3m

TU Delft Science Centre, Delft, Netherlands

SELECTED WORKS



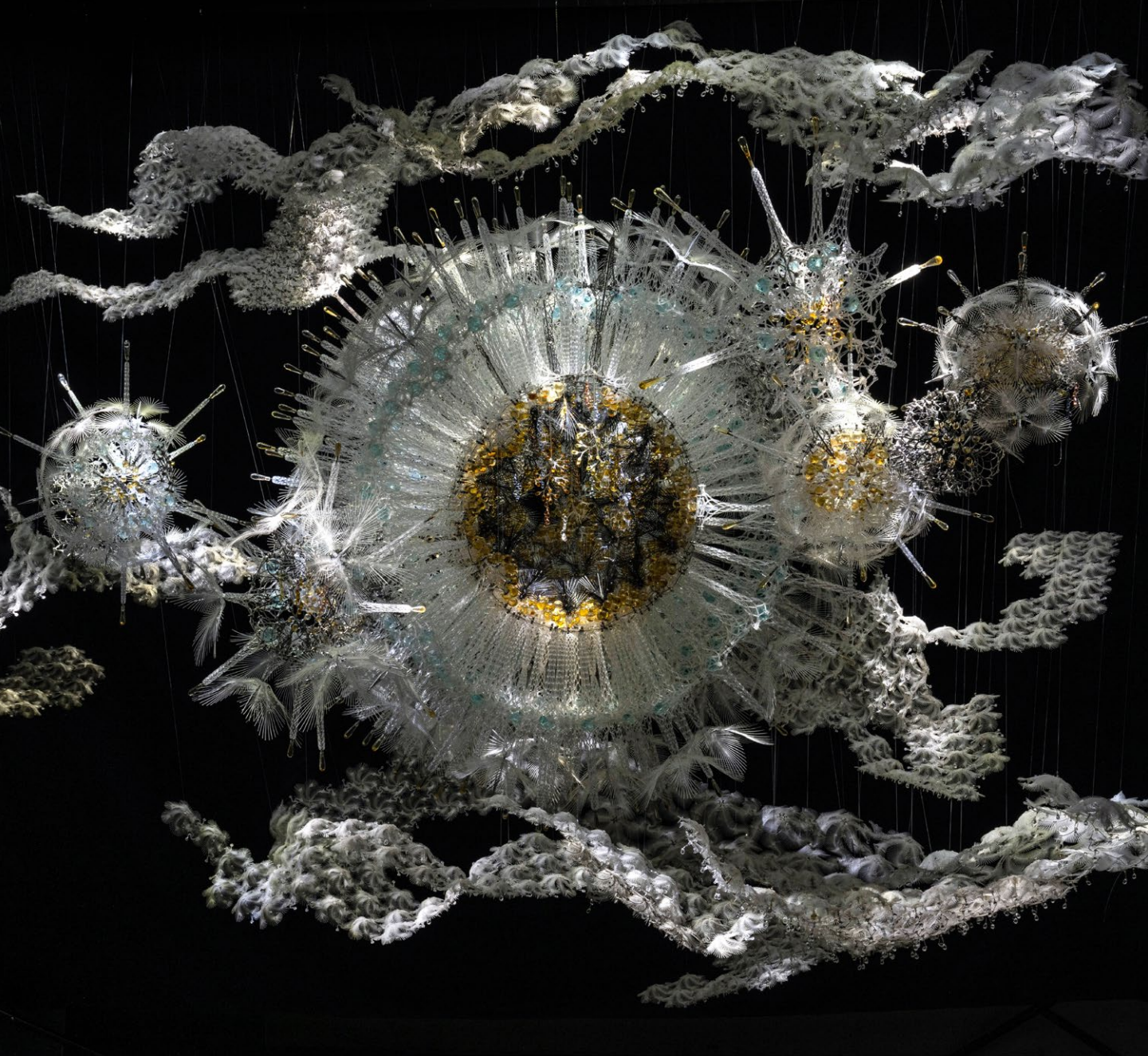
CONSTELLATION 2024
Metal, Polymer, Glass, ProtoCell Liquids
5m × 17m × 3m
798CUBE, Beijing Art & Technology Biennale, China

PHILIP BEESLEY



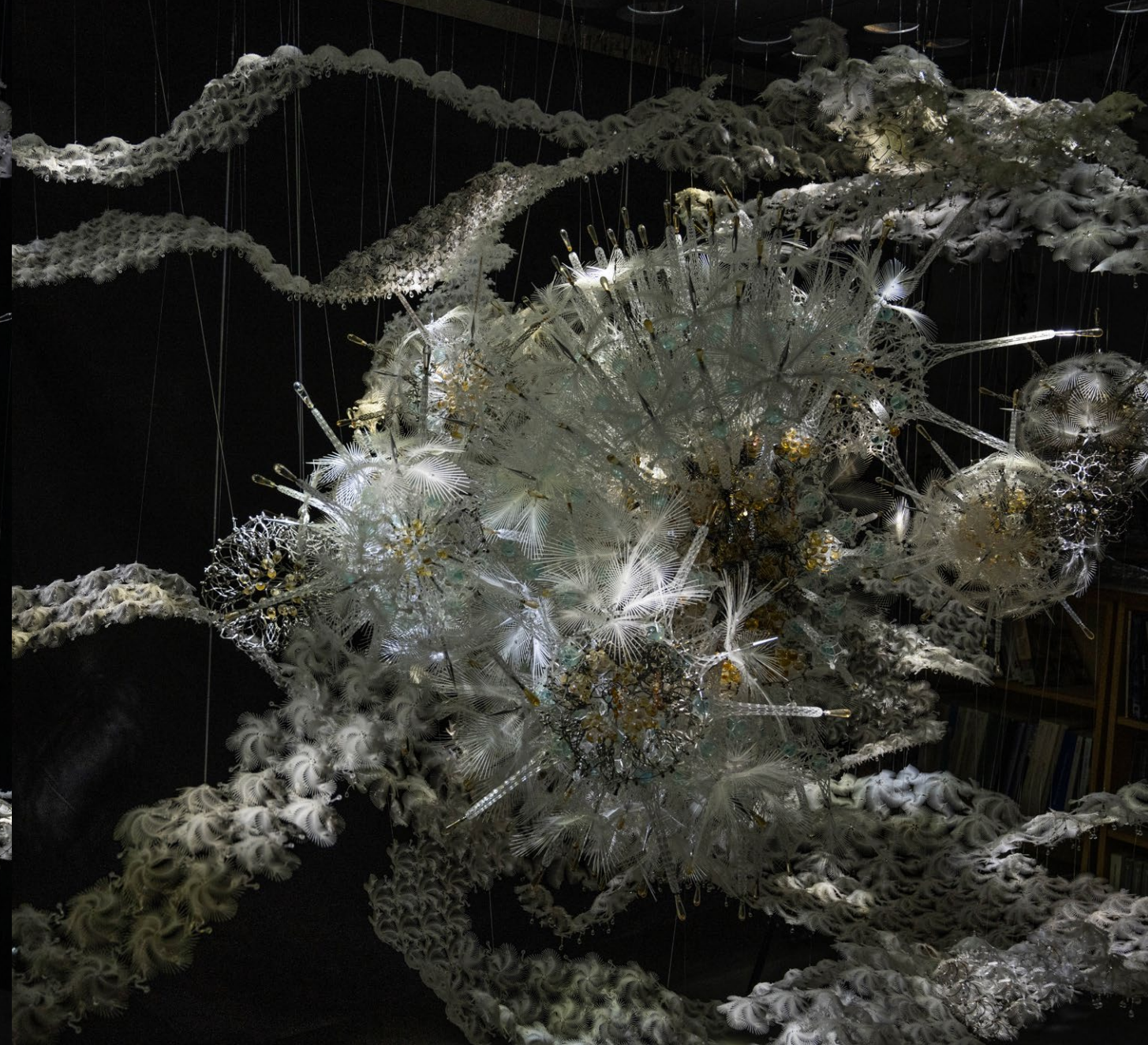
AR FROUT REEF 2022
Metal, Polymer, Glass, ProtoCell Liquids, Interactive Lights
7m × 14m × 6m
Ar Frouit Castle, Carantec, France

SELECTED WORKS



THRESHOLD 2021
Metal, Polymer, Glass
Two display cases, 1.5m × 5m × 2.4m each
Norman Y Mineta International Airport, San Jose, USA

PHILIP BEESLEY



THRESHOLD 2021
Metal, Polymer, Glass
Two display cases, 1.5m × 5m × 2.4m each
Norman Y Mineta International Airport, San Jose, USA

SELECTED WORKS



GROVE and CRADLE 2021

Custom Speakers, Polymer, Glass, Protocell Liquids, Immersive Projection of Film Composition and Soundscape
12m × 12m × 9m
Arsenale, La Biennale di Venezia, Venice, Italy

PHILIP BEESLEY



MEANDER 2020

Metal, Polymer, Glass, Protocell Liquids, Interactive Kinetics and Lights, Custom Speakers, Soundscape
16m × 30m × 14m
Tapestry Hall, Cambridge, Canada

SELECTED WORKS



FUTURIUM NOOSPHERE 2019

Metal, Polymer, Glass, Protocell Liquids, Interactive Kinetics and Lights, Custom Speakers, Soundscape

5m × 17m × 3m

Futurium, Berlin, Germany

PHILIP BEESLEY



AMATRIA 2018

Metal, Polymer, Glass, Protocell Liquids, Interactive Kinetics and Lights, Custom Speakers, Soundscape

14m × 8m × 8m

Indiana University, Bloomington, USA

SELECTED WORKS



NOOSPHERE within TRANSFORMING SPACE 2018

Metal, Polymer, Glass, Protocell Liquids, Interactive Kinetics and Lights, Custom Speakers, Soundscape
14m x 8m x 8m

Philip Beesley & Iris van Herpen, Royal Ontario Museum, Toronto, Canada

PHILIP BEESLEY



SENTIENT VEIL 2017

Metal, Polymer, Glass, Protocell Liquids, Interactive Lights, Custom Speakers, Soundscape
5m x 3m x 2m

Isabella Stewart Gardner Museum, Boston, USA

SELECTED WORKS



EPIPHYTE MEMBRANE 2014

Metal, Polymer, Glass, Protocell Liquids, Interactive Lights, Custom Speakers, Soundscape
12m × 3m × 4m
Photography Playground, Berlin, Germany

PHILIP BEESLEY



EPIPHYTE CHAMBER 2013

Metal, Polymer, Glass, Protocell Liquids, Interactive Kinetics and Lights, Custom Speakers, Soundscape
6m × 10m × 5m
Museum of Modern and Contemporary Art, Seoul, South Korea

SELECTED WORKS



AURORA 2013

Metal, Polymer, Glass, Interactive Lights

15m × 10m × 6m

Simons Department Store, West Edmonton Mall, Canada

PHILIP BEESLEY



SARGASSO 2011

Metal, Polymer, Glass, Protocell Liquids, Interactive Kinetics and Lights, Custom Speakers, Soundscape

30m × 10m × 14m

Brookfield Place, Toronto, Canada

SELECTED WORKS

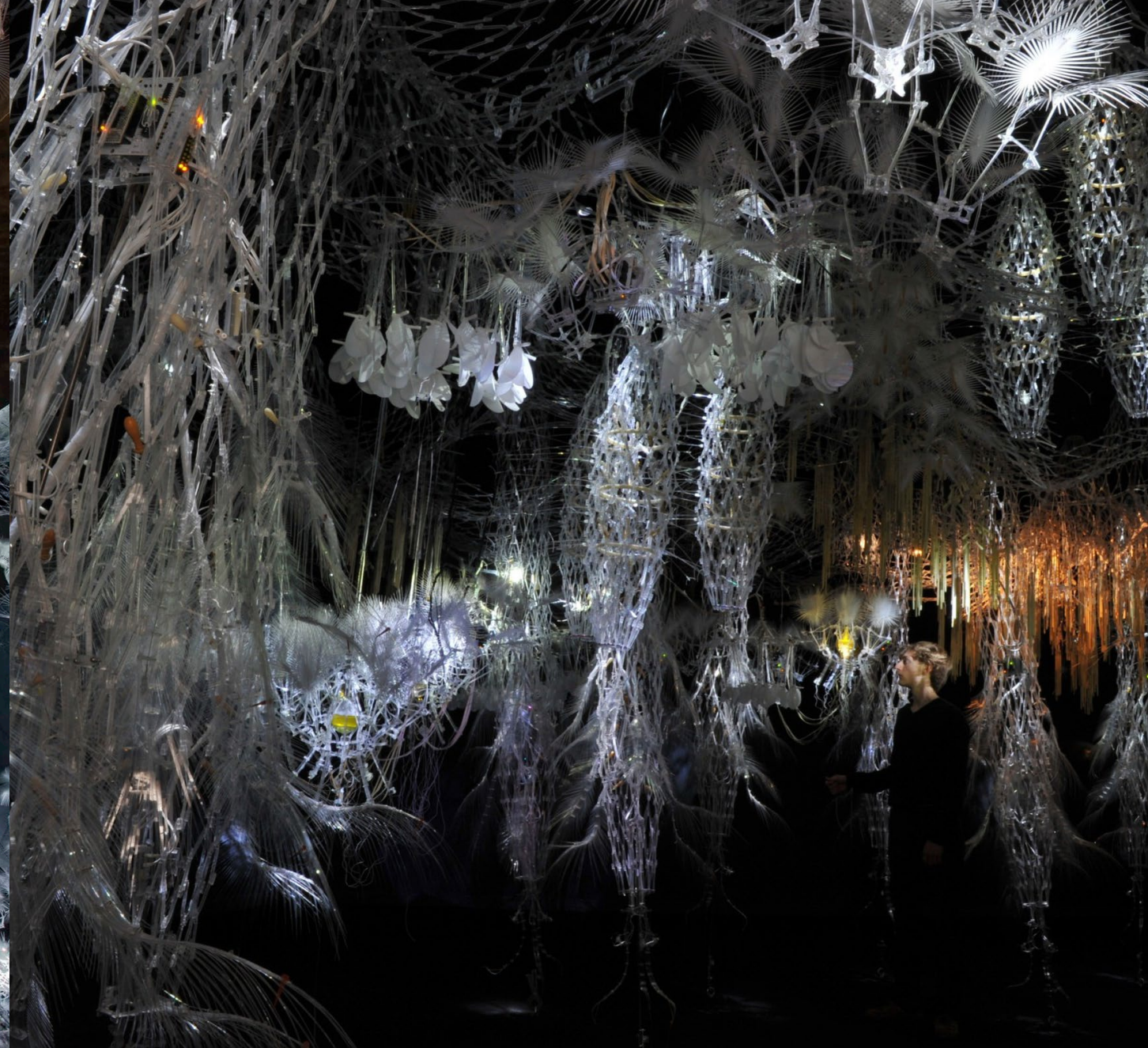


HYLOZOIC VEIL 2011

Metal, Polymer, Glass, protocell liquids, interactive kinetics and lights
24m x 24m x 16m

The Leonardo Museum for Art, Science & Technology, Salt Lake City, Utah, USA

PHILIP BEESLEY

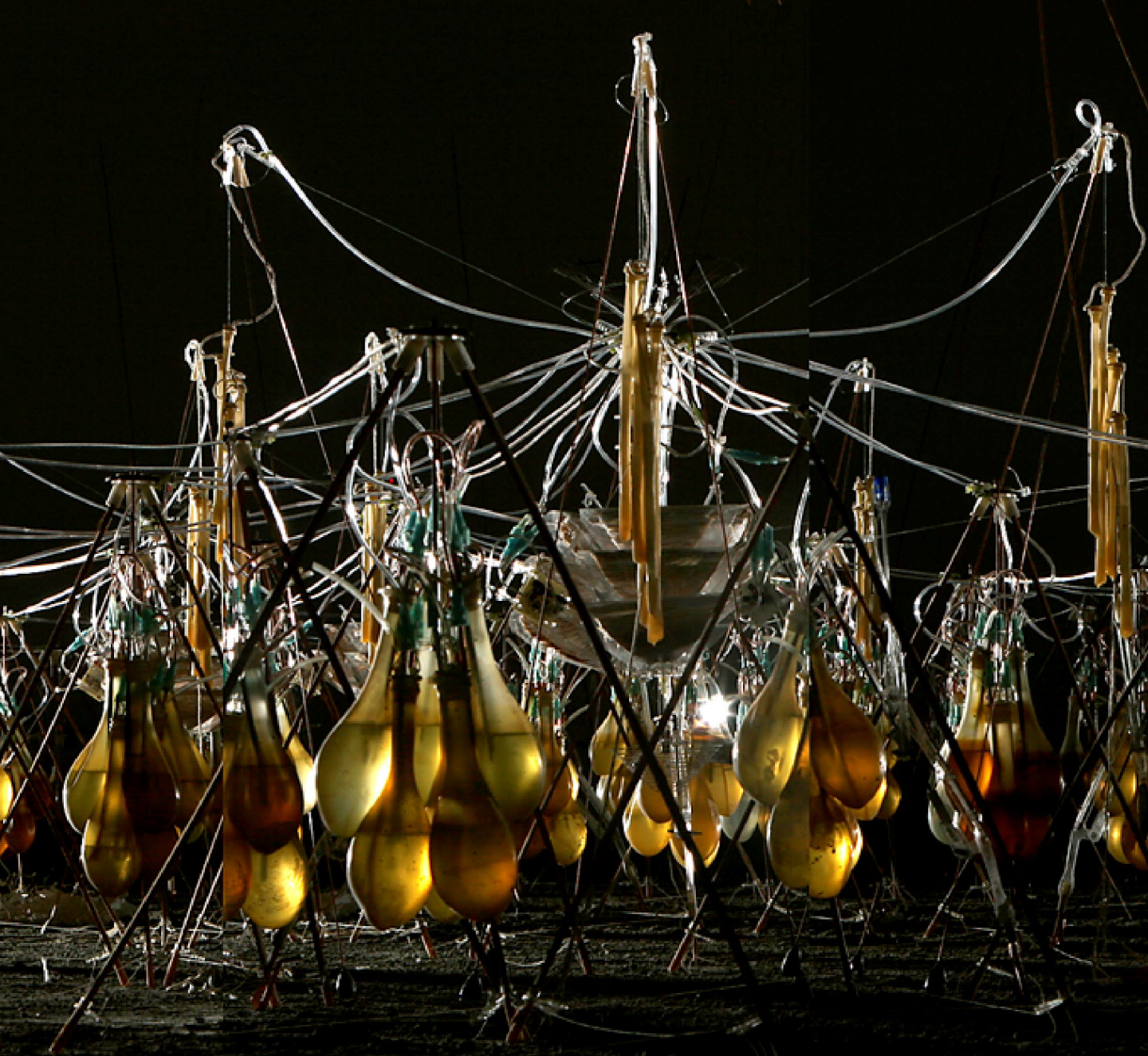


HYLOZOIC GROUND 2010

Metal, Polymer, Glass, protocell liquids, interactive kinetics and lights
40m x 14m x 5m

Arsenale, La Biennale di Venezia, Venice, Italy

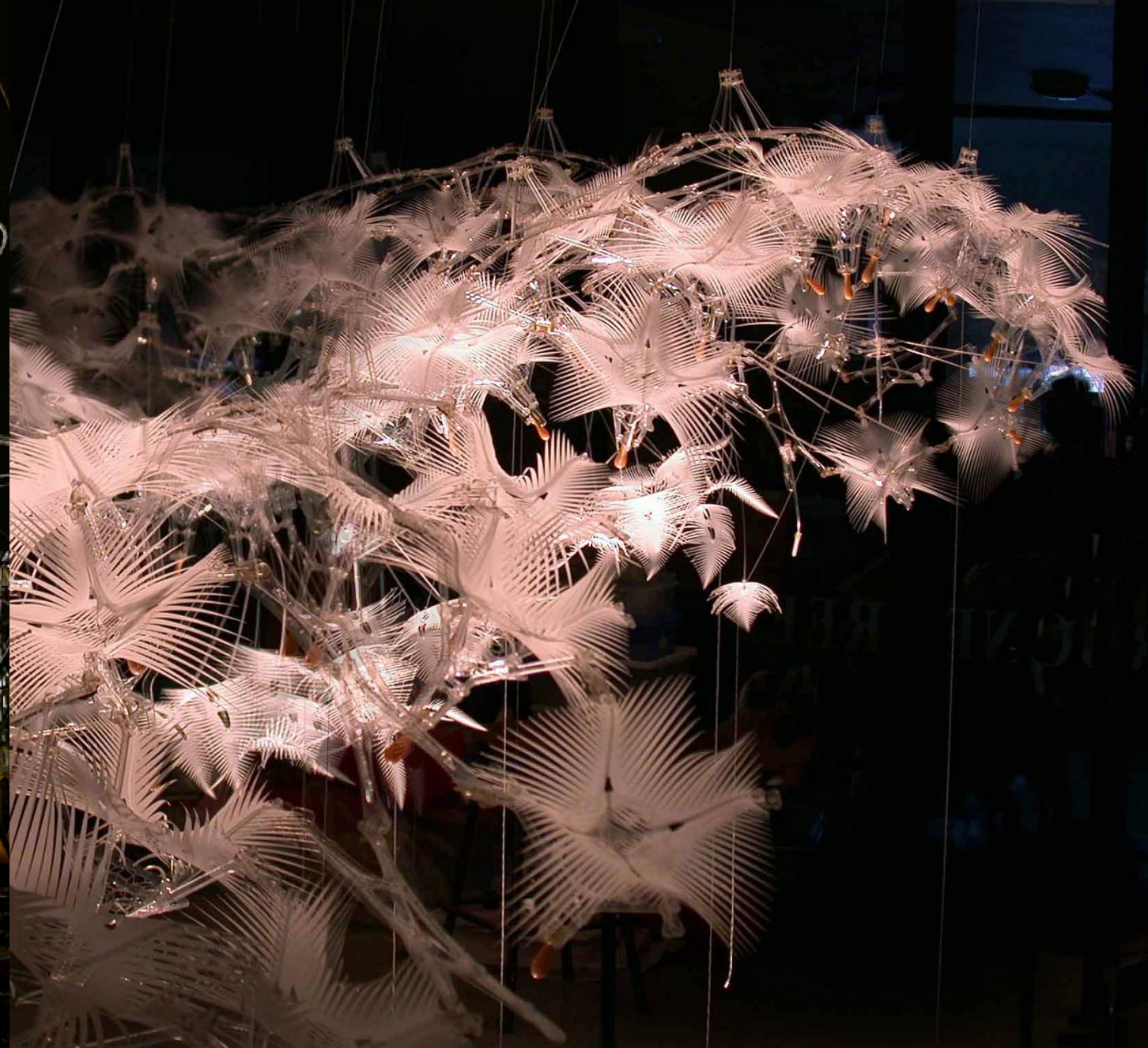
SELECTED WORKS



MENISCUS 2008

Metal, Bamboo, Latex, Polymer, Glass, Organic Batteries, Dynamic Kinetics and Lights
Broad Art Centre, UCLA, Los Angeles, USA

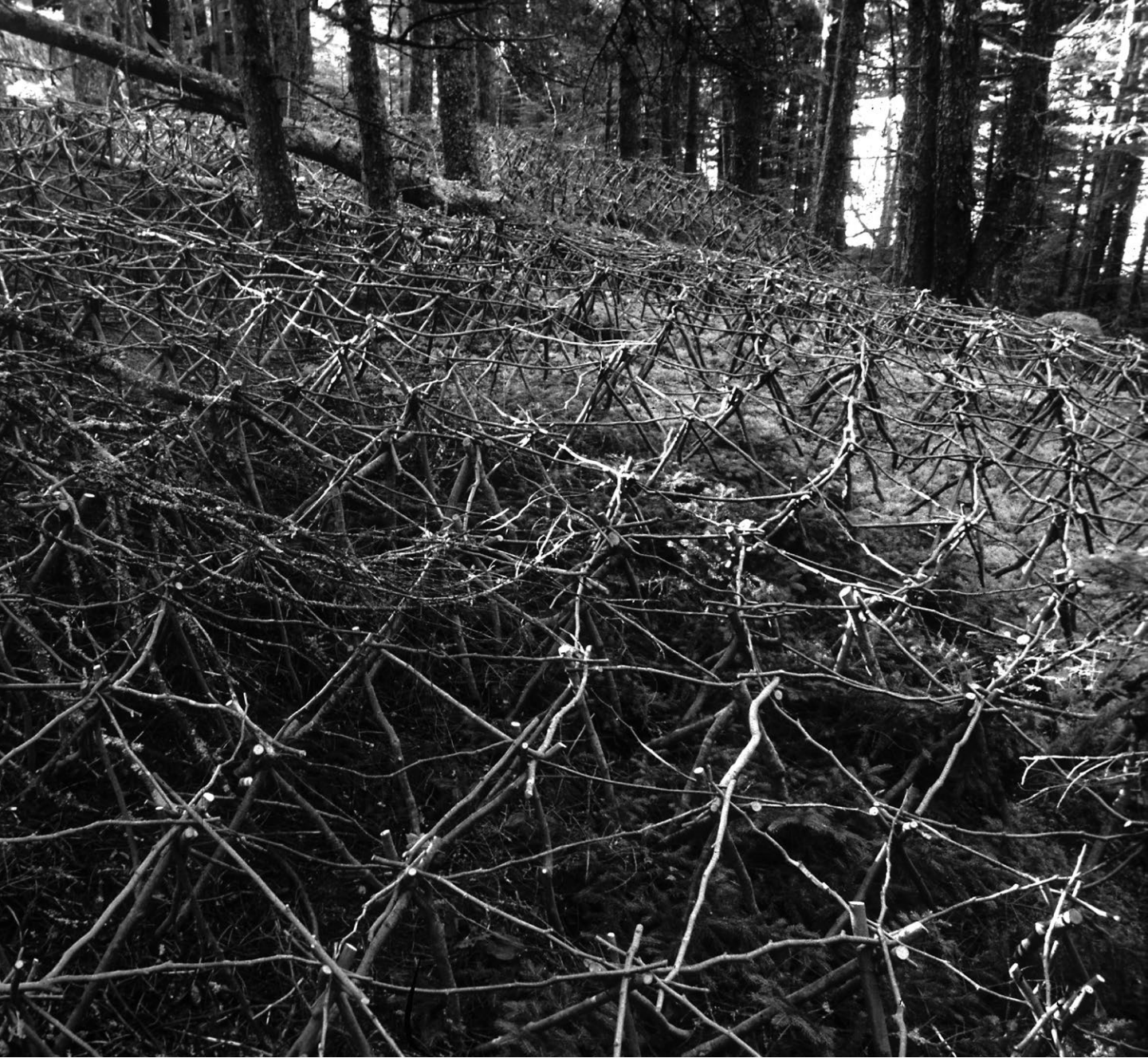
PHILIP BEESLEY



ORGONE REEF 2003

Metal, Polymer, Glass, Latex, Salt
University of Manitoba, Winnipeg, Canada

SELECTED WORKS



HAYSTACK VEIL 1997

Saplings, Metal

Philip Beesley, Warren Seelig & Haystack Mountain School of Crafts
Deer Isle, Maine, USA

PHILIP BEESLEY



ERRATICS NET 1998

Zinc, Steel Wire

Philip Beesley & Daltech Department of Architecture
Peggy's Cove, Nova Scotia, Canada

SELECTED WORKS



VOLTAGE COAT HAUTE COUTURE with LIVING SHADOWS 2013/2023

Voltage Collection / Sculpting the Senses Exhibition

Iris van Herpen, Philip Beesley & Kevan Cress

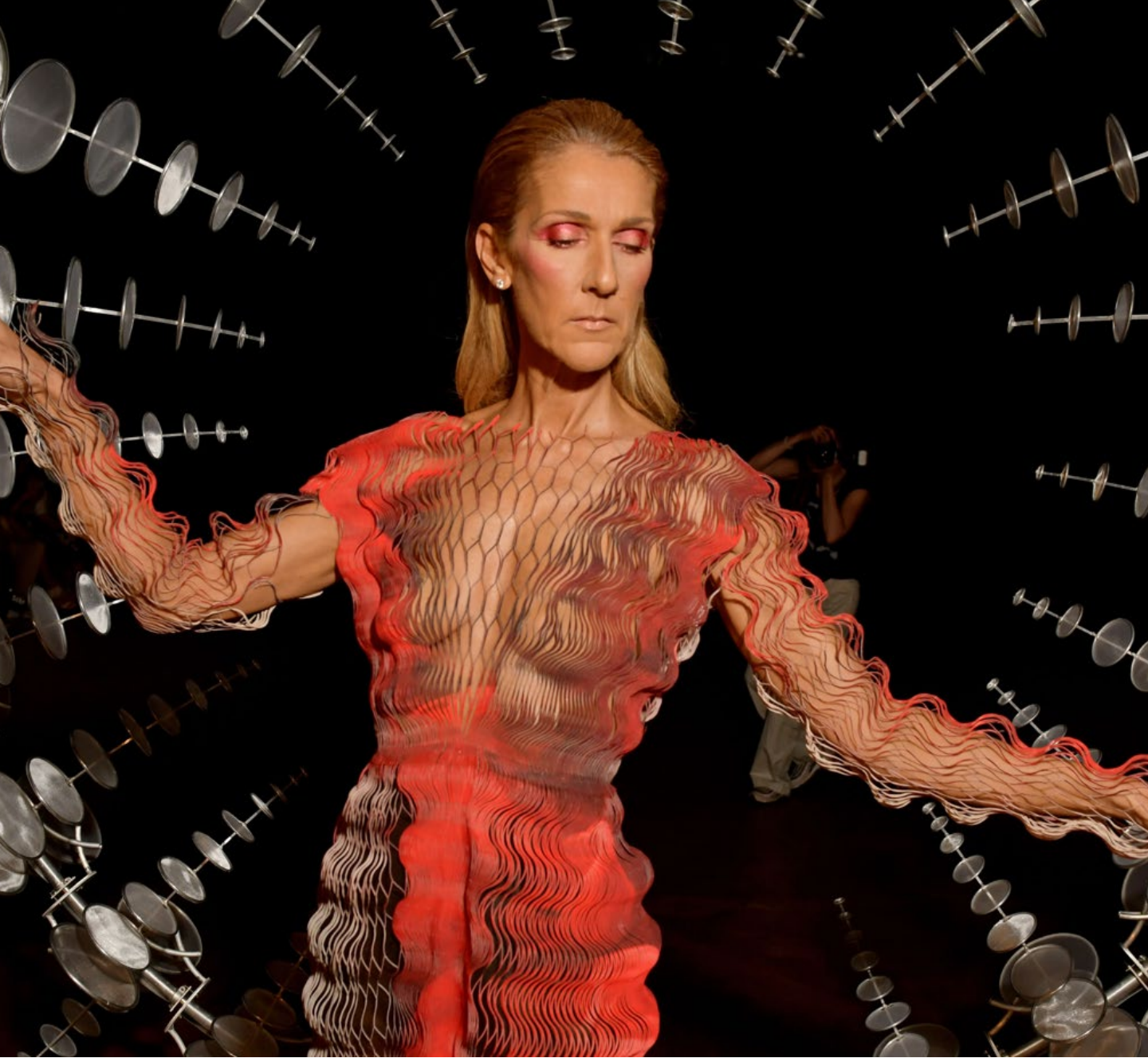
White Mylar Antennae Fronds, Black Microfibre Coat, Generative Projections

MORPHOGENESIS DRSS HAUTE COUTURE 2020

Sensory Seas Collection

Iris van Herpen & Philip Beesley

Laser-cut Screen-printing Mesh with Triangulated Chevron Hardware



GALACTIC GLITCH DRESS HAUTE COUTURE 2019

Shift Souls Collection

Iris van Herpen & Philip Beesley

Vermilion Cloud-printed Komon Koubou Textile, Laser-cut Mylar, Heat-bonded

PHILIP BEESLEY



AERIFORM DRESS HAUTE COUTURE 2017

Aeriform Collection

Iris van Herpen & Philip Beesley

Mechanically formed Laser-cut Zinc-coated Steel

SELECTED WORKS

SELECTED VIDEO LINKS



CRADLE, FILM FOR GROVE, VENICE BIENNALE, 2022

<https://www.youtube.com/watch?v=OhpSThBLd7o>



TORONTO STUDIO BEHIND THE SCENES,
PROMOTIONAL VIDEO FOR VOLTERA, 2019

<https://www.youtube.com/watch?v=EhB1nyh9tkE>



BEESLEY AND VAN HERPEN, ROM TORONTO, 2018

<https://www.youtube.com/watch?v=SR5RJzMCvY8>



AMATRIA, INDIANA UNIVERSITY BLOOMINGTON, 2018

<https://www.youtube.com/watch?v=VPMqSgk1RGk&t=20s>



SENTIENT VEIL, BOSTON, 2017

<https://vimeo.com/207342339>



EPIPHYTE MEMBRANE, BERLIN, 2016

<https://vimeo.com/108479045>



SIBYL, SYDNEY BIENNIAL, 2012

<https://vimeo.com/109144235>



HYLOZOIC GROUND, VENICE BIENNALE, 2010

https://www.youtube.com/watch?v=v86B9Nz_LYU

